
Pollution Incident Response Management Plan (PIRMP)

ProTen Poultry

21 August 2024

Revision Date: 21 August 2024

Pollution Incident Response Management Plan

Company Name:	ProTen Poultry
Address of Site:	Licence No: 11110 Farm 53, 126 Millis Rd Hanwood Licence No: 11111 Farm 54, 1068 North Kooba Settlers Rd Willbriggie Licence No: 11107 Farm 55, 1068 North Kooba Settlers Rd Willbriggie Licence No: 11106 Farm 56, 1068 North Kooba Settlers Rd Willbriggie Licence No: 11109 Farm 57 ,1055 Kidman Way Hanwood Licence No: 11104 Farm 63 and 64, 1061 Crawford Rd Hanwood Licence No: 11105 Farm 65 and 66, 1061 Crawford Rd Hanwood Licence No: 12512 Farm 67 and 68, 330 Gum Creek Rd Griffith
Description of activities on site:	Contract Broiler Chicken Growing. Rearing/growing Broiler chickens from day old to depletion in tunnel ventilated sheds.
Date plan completed:	21 August 2024
Date plan to be reviewed:	1 September 2025
Company Manager Sign off:	
Controlled Copy held by:	James Wentworth Chief Executive Officer
Associated Documentation	

Table of Contents

Pollution Incident Response Management Plan.....	1
Amendment Register	3
Description and likelihood of hazards	5
Pre-emptive actions to be taken	8
Inventory of pollutants	9
Safety Equipment	10
Contact Details.....	12
Minimising harm to persons on the premises	16
Maps.....	17
Actions to be taken during or immediately after a pollution incident.....	19
Staff Training.....	22
Testing the PIRMP	22
Plan Availability.....	23
Implementation of the PIRMP	24
Definitions	24
Appendix 1 – Chemical Register	25
Appendix 2 – Maps.....	26
Farm 53.....	27
Farm 54.....	28
Farm 55.....	29
Farm 56.....	30
Farm 57.....	31
Farm 63.....	32
Farm 64.....	33
Farm 65.....	34
Farm 66.....	35
Farm 67.....	36
Farm 68.....	37

Amendment Register

Reference Number	Documentation	Amendment Date	Type of Amendment	By Whom	Distribution
Version 1	Pollution Incident Response Management Plan (PIRMP)	30/8/2013	Addition of Version number to bottom of page	Kathryn Singh	RFM - Electronic Copy on F drive
Version 2	PIRMP	19/9/2013	Addition of: <ul style="list-style-type: none"> - Page numbers - Added QuickBase to training records (pg. 18) - Changed HSE Advisor Contact number (pg. 11) - Added Amendment Register to document - Updated 'Table of Contents' - Revision Date added to front page of document 	Kathryn Singh	RFM - Electronic Copy on F drive National Manager Poultry Area Manager Poultry All farms
Version 3	PIRMP	1/7/2014	<ul style="list-style-type: none"> - Change of name from RFM Chicken Income Fund to RFM Poultry. - Addition of External Reporting (pg. 17) - Updated Table of Contents - Revision Date changed on the front page of the document 	Kathryn Singh	RFM - Electronic Copy on F drive National Manager Poultry Area Manager Poultry All farms
Version 4	PIRMP	14/10/2014	<ul style="list-style-type: none"> - Addition of Post Incident Notification to Communicating with neighbours and the local community (pg. 13) - Addition to Emergency Scenario Testing to contact Environment Line as part of the Desktop Simulation. 	Kathryn Singh	RFM - Electronic Copy on F drive National Manager Poultry Area Manager Poultry All farms
Version 5	PIRMP	31/7/2018	<ul style="list-style-type: none"> - Addition to Contact details (pg. 11) Michael Hogno added to list - Revision Date changed on the from page of this document 	Rachel Dreyer	RFM - Electronic Copy on F drive. National Manager Poultry Operations Manager Poultry All farms
Version 6	PIRMP	15/10/2018	<ul style="list-style-type: none"> - Lectra Clean (Class 2) Kleer (Class 3) and Agriphor (Class 8) removed from Storage of onsite chemicals - Addition of new maps 		
Version 7	PIRMP	29/04/2020	<ul style="list-style-type: none"> - Updated to include reference to ProTen and correct contact details. 	Samantha Hayes	ProTen - To all Farm Managers and the Risk Manager

Reference Number	Documentation	Amendment Date	Type of Amendment	By Whom	Distribution
Version 8	PIRMP	25/09/2020	- Update of PIRMP testing history and contact details	Samuel McDonald / Samantha Hayes	ProTen - To all Farm Managers and the Risk Manager
Version 9	PIRMP	25/10/2021	- Update of PIRMP testing history and contact details	Samuel McDonald	ProTen - To all Farm Managers and the Risk Manager
Version 10	PIRMP	27/10/2022	- Update of PIRMP testing history and contact details	Samuel McDonald	ProTen - To all Farm Managers and the Risk Manager
Version 11	PRIMP	21/08/2024	- Update of PIRMP testing history, contact details and safety equipment and maps, Definitions, Storage onsite chemicals	Cherish Barnard	ProTen – To all Farm Managers and the National SHEQ Manager

Description and likelihood of hazards

The following hazards have been identified through the process of Risk Assessment and review for the site:

Activity	Hazard and Impact	Existing Controls	Residual Risk		
			Probability	Consequence	Risk Rating
Transporting, decanting, storage, mixing and application chemicals or substances	Spills or leaks resulting in occupational and environmental exposure	<p><u>SOP</u>: Chemical Management. Emergency Procedures.</p> <p><u>Physical</u>: Personal Protective Equipment. Automatic dosers. Use of reservoir containers for footbath solution eliminates need for measuring out chemical. Protective equipment - goggles, gloves, face shield. Workable shower on each site.</p> <p><u>Procedural</u>: Procedures for task, SDS available. Chemcert accreditation for operators.</p> <p><u>Behavioural</u>: Training on-the-job for tasks.</p>	Unlikely	Minor	LOW
Application of chemicals or substances	Spray drift resulting in non-target damage or occupational exposure	<p><u>SOP</u>: Chemical Management. Emergency Procedures.</p> <p><u>Physical</u>: Designated trained spray operators on sites. Trained Contractors used for shed disinfection. Sheds are physically locked after spraying/fumigation to prevent entry.</p> <p><u>Procedural</u>: Outside spray in correct environmental conditions. Records kept of chemical applications including current weather conditions.</p> <p><u>Behavioural</u>: Accredited Chemical Training for Operators.</p>	Unlikely	Minor	LOW
Emergency	Loss due to flood, fire, vehicle, structural and medical.	<p><u>SOP</u>: Emergency Procedures</p> <p><u>Physical</u>: Phones for 24-hour communication.</p> <p><u>Procedural</u>: Emergency Management Plan. Incident reporting procedure. Evacuation Procedure. 6 monthly evacuation practice drills.</p> <p><u>Behavioral</u>: Weather monitoring. Regular Maintenance of roads and channels. Slashing and spraying to reduce fuel.</p>	Unlikely	Moderate	MEDIUM

Activity	Hazard and Impact	Existing Controls	Residual Risk		
			Probability	Consequence	Risk Rating
Flood (1 in 100-year flood)	Contamination of Mirrool Creak and Farm Dam from Flood Water and poultry manure.	<p><u>SOP</u>: Emergency Procedures</p> <p><u>Physical</u>: Phones for 24-hour communication. Filtering and chemical sterilisation of drinking and stock water.</p> <p><u>Procedural</u>: Emergency management Plan. Incident reporting procedure. Evacuation Procedure. 6 monthly evacuation drills. Permission to be sought for formation of any levee banks with Murrumbidgee Irrigation.</p> <p><u>Behavioural</u>: Weather monitoring. Removal of manure and litter from sheds before entry of flood water.</p>	Unlikely	Moderate	MEDIUM
	Flood and heavy rainfall events cause dam failures resulting in discharges.	<p><u>Sediment and erosion controls for unsealed areas are implemented and regularly inspected.</u></p> <p><u>Stormwater run-off is treated according to the approved Soil and Water Management Plan to meet EPL conditions and maintain capacity</u></p> <p><u>Integrity of dams is regularly reviewed</u></p> <p><u>Bunds are kept empty to prevent them being filled with stormwater.</u></p> <p><u>Chemicals are stored above areas that are prone to inundation.</u></p> <p><u>all loose items are secured to prevent them coming into contact with floodwater.</u></p> <p><u>Storage of leachate / effluent / wastewater storage is reduced as far as practicable on site.</u></p> <p><u>Irrigation activities review soil conditions during prolonged wet conditions.</u></p> <p><u>Irrigation activities are regularly assessed for effectiveness</u></p> <p><u>Contingency plans are implemented in accordance with the site Soil and Water Management Plan.</u></p>	Probable	Minor	SIGNIFICANT
Storage of LPG and natural Gas	Uncontrolled release of gas resulting in environmental exposure.	<p><u>SOP</u>: Emergency Procedures.</p> <p><u>Physical</u>: Isolation valves.</p> <p><u>Procedural</u>: Emergency Management Plan.</p> <p><u>Behavioural</u>: 6 monthly evacuation drills.</p>	Rare	Moderate	MEDIUM

Storage of the following onsite chemicals, which may include Dangerous Goods:

Class 2

- Liquefied Petroleum Gas (LPG)
- Natural Gas (piped)
- Fula Foam Expand Foam
- Marten Rodent Control Pellet

Class 3

- Polyphen
- Unleaded Petrol
- Round Up Ultramax
- Pipemaster Red Primer

Class 5

- Hy Chlor Lasting Swimming Pool Tablets
- Twin Oxide Part A 0.3%

Class 8

- TwinOxide 0.3% Solution
- Sodium Hypochlorite 12.5%
- Proxitane (on site only during cleanout)
- Apparent Parraquat Herbicide
- Glutachem (on site only during cleanout)
- Oxyfluorfen Cavalier Herbicide

Class 9

- Diesel
- Glyphosate
- Apparent Wetter Herbicide
- Apparent Oxyfluorfen Herbicide
- Apparent 2 4-D Ester 680 Herbicide
- Striker Herbicide
- ADAMA MCPA 750 Selective Herbicide
- Castrol Premium Cool Plus 50
- Crucial Herbicide
- Apparent Axeman 600 Herbicide
- Apparent Concussion 540 Herbicide

The following chemicals are brought on site by Baiada Contractor during clean out as required in a bundled trailer.

Class 8

- Formaldehyde Solution

Storage of chemicals – chemicals are stored on this site as per the Chemical Register (**Appendix 1**) which includes their maximum quantities kept.

Pre-emptive actions to be taken

Routine Maintenance

- Routine maintenance of all mobile plant and vehicles is undertaken and recorded.
- Pre-start checks are undertaken daily on all mobile plant, including tractors and ATV's.
- Pre-start checks on bunded diesel trailer prior to each use.

Training

- Farm Managers required to complete authorized chemical certification course.
- Farm workers to be trained on the job for specific hazardous substances, including their safe use, handling and storage.

Fire extinguishers maintained on all sites

- Fire equipment is inspected every 6 months by external contractor.

Storage

- Small volumes of hazardous substances kept on site (as per Chemical Register).
- Mobile diesel trailers bunded and sealed.
- Spill kit on site appropriate for the volume and type of chemicals stored.
- Bollards erected around LPG tanks and above ground natural gas mains to protect from mobile vehicles and equipment.
- Inspections of hazardous substance storage areas is undertaken on a minimum of one per month.

Inventory of pollutants

Pollutant	Quantity on Site
Various	See Appendix 1 – Chemical Register (Site specific). Note Farms 54,55,57,63,65 and 66 are no longer operational and therefore do not require chemical registers.

Safety Equipment

Farm 53

- Safety Data Sheets (SDS) stored in both lunchrooms of property.
- Fire Extinguisher at farm amenities, front and rear of each shed, pump shed.
- Personal Protective Equipment (PPE) stored in lunchroom at farm amenities.
- Spill kit stored at chemical storage area.

Farm 54 – No Longer Operational

- Fire Extinguisher at farm amenities, front and rear of every second shed, pump shed.
- PPE stored in lunchroom at farm amenities.
- Spill kit stored at chemical storage area.

Farm 55 – No Longer Operational

- Fire Extinguisher at farm amenities, front and rear of every second shed, pump shed.
- PPE stored in lunchroom at farm amenities.
- Spill kit stored at chemical storage area.

Farm 56

- SDS stored in lunchroom of property.
- Fire Extinguisher at farm amenities, front and rear of each shed, pump shed.
- PPE stored in lunchroom at farm amenities
- Spill kit stored at chemical storage area.

Farm 57 – No Longer Operational

- Fire Extinguisher at farm amenities, front and rear of each shed, pump shed Farm 57.
- PPE stored in lunchroom at farm amenities.
- Spill kit stored at chemical storage area.

Farm 63 – No Longer Operational

- Fire Extinguisher at farm amenities, front and rear of every second shed, pump shed.
- PPE stored in lunchroom at farm amenities.
- Spill kit stored at chemical storage area.

Farm 64

- SDS stored in lunchroom of Farm 63 and 64.
- Fire Extinguisher at farm amenities, front and rear of each shed, pump shed.
- PPE stored in lunchroom at farm amenities.
- Spill kit stored at chemical storage area.

Farm 65 and 66 – No Longer Operational

- Fire Extinguisher at farm amenities, front and rear of each shed, pump shed.
- PPE stored in lunchroom at farm amenities.
- Spill kit stored at chemical storage area.

-

Farm 67 and 68

- SDS stored in lunchroom of Farm 67 and 68.
- Fire Extinguisher at farm amenities, front and rear of each shed, pump shed and generators.
- Hose reels at LPG gas tanks on each farm.
- PPE stored in lunchroom at farm amenities.
- Spill kit stored at chemical storage area.

Contact Details

Emergency

000 if the incident presents an immediate threat to human health or property.

ProTen Contacts

Name	Role	Location	Contact Details
	CEO	Head Office	
	National SHEQ Manager	Griffith	
	Regional Operations Manager	Griffith and Hanwood	
	Farm Manager	Farm 53	
	Farm Manager	Farm 56	
	Farm Manager	Farm 64	
	Farm Manager	Farm 67	
	Farm Manager	Farm 68	

Authorities

Griffith City Council	02 6962 8100 council@griffith.nsw.gov.au
EPA	131 555 info@environment.nsw.gov.au
NSW Public Health Unit (Albury)	02 6080 8900
SafeWork NSW	131 050 Select Option 3 to report a “Serious Incident or Fatality” – this will result in the incident being recorded and the appropriate person being contacted.
Fire and Rescue NSW	000 02 6964 4152 (Griffith Fire Station)
Rural Fire Service (Regional Office)	02 6966 7800
Department of Primary Industries	General enquiries – Ph: 02 6391 3100 Agriculture – Ph: 1800 808 095 Email: nsw.agriculture@dpi.nsw.gov.au

Other Authorities to be notified where required:

SES	132 500
Department of Primary Industries – Agriculture	1800 808 095
NSW Poisons Information Centre	131 126
Murrumbidgee Irrigation	02 6962 0200

Communicating with neighbours and the local community

The following communication pathways will be implemented in the event of an incident for neighbours and the local community:

Early Warnings

Risk	Communication Mechanism
Immediate	Telephone call or door knocking Pager and/or text message to those on ProTen Alarm Network Radio call
Not in immediate risk	Email or letter or Community Liaison Committee Pager and/or text message to those on ProTen Communication Network
MIA Envirowise, Downstream Users and Irrigators where local water sources affected	Local newspaper and or through the local water authority (Murrumbidgee irrigation)

Updates

	Communication Mechanism
Internal Staff	Email or direct verbal communication face-to-face or on the telephone <i>(NB: Mode of communication will depend on the relevance of the information to each individual, and how they are immediately affected by the situation)</i>
Owners and Occupiers of Premises who may be affected	<u>Immediate Risk</u> Telephone communication (if individual is at immediate risk <u>Not at Immediate risk</u> Fax, email or company website <i>(NB: Information provided will depend on the nature of the incident and the risk involved. For High Risk incidents, emergency authorities will direct the information to be passed on)</i>
MIA Envirowise, Downstream Users and Irrigators Where local water sources affected	Local newspaper and or through the local water authority (Murrumbidgee irrigation) <i>(NB: If there is a likelihood to discharge into a water source or creek)</i>

Post Incident

Post Incident Communication will only be given to those who were contacted in the previous stages of the Incident Notification Process.

	Communication Mechanism
Internal Staff	Email or direct verbal communication face-to-face <i>(NB: Mode of communication will depend on the relevance of the information to each individual, and how they are immediately affected by the situation)</i>
Owners and Occupiers of Premises who may be affected	<u>Immediate Risk</u> Telephone communication (if individual is at immediate risk) <u>Not at Immediate risk</u> Fax, email or company website <i>(NB: Information provided will depend on the nature of the incident and the risk involved. For High Risk incidents, emergency authorities will direct the information to be passed on)</i>
MIA Envirowise, Downstream Users and Irrigators Where local water sources affected	Through the local water authority (Murrumbidgee Irrigation) <i>(NB: If there was a discharge into a water source or creek)</i>

Minimising harm to persons on the premises

The following Farm Evacuation Procedure is to be activated to minimise harm to people on the premises.

Emergency Evacuation Procedure	
STEP 1	Assist anyone in danger "IF SAFE TO DO SO"
STEP 2	Notify your Farm Manager. Contact Emergency Services as required.
STEP 3	Evacuate all personnel on site. Farm Manager to drive around sheds sounding horn continuously as a signal for people to leave the sheds and move to the Evacuation Point.
STEP 4	If safe, trained personnel to use an extinguisher in the event of a fire. Note: only if the situation is safe and under control.
STEP 5	Move to the Evacuation Point. If Evacuation Point 1 is unsafe move to Evacuation Point 2.
STEP 6	Farm Manager to take roll call.
STEP 7	Send someone to front gate to direct emergency services.

Emergency evacuation muster locations are clearly signposted on each site. A map of this site showing the location of each of these points is available at each farm.

Audible warning alarms to be used are the continuous sounding of a bike or vehicle horn.

Pager, text and radio messages are to be implemented to notify ProTen Sites.

Suitable consultants to provide expert knowledge on medical, toxicology and environmental impact will be engaged by ProTen where required.

Maps

Maps for each site are located in **Appendix 2** detailing location of the following:

- Hazardous Substance Storage
- Fire Extinguishers and Hose Reels
- Emergency Evacuation Points
- First Aid Kit
- Fuel Storage
- Gas Storage (LPG)
- Natural Gas Isolation Point

The following lists the water sources and their distance from each property.

Farm 53

- Farm Dam (on property)
- Mirrool Creek 2km
- Minor Water Supply Channel – 100m from Shed 20

Farm 54

- Farm Dam (on property)
- Mirrool Creek – 294 m from Farm 54
- Minor Water Supply Channel 190m

Farm 55

- Farm Dam (on property)
- Mirrool Creek – 625m from Farm 55
- Minor Water Supply Channel 180m

Farm 56

- Farm Dam (on property)
- Mirrool Creek – 1.3km from Farm 56
- Minor Water Supply Channel 160m

Farm 57

- Farm Dam (on property)
- Mirrool Creek –1.0km from Farm 57
Minor Water Supply Channel – 0.7km from Farm 57

Farm 63 and 64

- Farm Dam (on property)
- Mirrool Creek – 306m from Farm 64; 1.2km from Farm 63
- Minor Water Supply Channel 134m from Farm 63 and 1.3km from Farm 64

Farm 65 and 66

- Farm Dam (on property)
- Mirrool Creek – 252m from Farm 65; 873m from Farm 66
- Minor Canal 681m from Farm 66 854m from Farm 65

Farm 68 and 68

- Farm Dam (on property)
- Mirrool Creek – 3.1km from Farm 68; 2.7km from Farm 68
- Mirrool Creek Branch Canal - 135m from Farm 68; 0.5km from Farm 68

Actions to be taken during or immediately after a pollution incident

Initial Response to an Incident

1. Call **000** if the incident presents an immediate threat to human health or property.

Fire and Rescue NSW, the NSW Police and the NSW Ambulance Service are the first responders, as they are responsible for controlling and containing incidents.

The Responsible Person or a delegate shall seek to contain the effects of the incident, make the area safe and ensure environmental containments are in place, and if appropriate, ensure the scene/evidence is secured.

2. **Call the Farm Manager. Where unavailable, the Risk Manager is to be contacted.**

For Major or Catastrophic incidents, unless an emergency response is required, the scene of the incident is not to be disturbed or altered in any way until express permission is granted by the Farm Manager via the Risk Manager.

Notification

If the incident does not require an initial combat agency, or once the 000 call has been made, the Farm Manager, in consultation with the Risk Manager will immediately notify each relevant authority (identified below) when material harm to the environment is caused or threatened. The authorities will be notified in the following order.

1. Griffith City Council	02 6962 8100
2. EPA	131 555
3. NSW Public Health Unit (Albury)	02 6080 8900
4. SafeWork NSW	131 050 Select Option 3 to report a "Serious Incident or Fatality" – this will result in the incident being recorded and the appropriate person being contacted.
5. Fire and Rescue NSW	000 6964 4152 (Griffith Fire Station)
6. Department of Primary Industries- General enquiries	Ph: 02 6391 3100
7. Department of Primary Industries- Agriculture	Email: nsw.agriculture@dpi.nsw.gov.au

Other Agencies that may be required to be contacted depending on the nature of the incident:

Rural Fire Service (Regional Office)	02 6966 7800
SES	132 500
Department of Primary Industries – Agriculture	1800 808 095
NSW Poisons Information centre	131 126
Murrumbidgee Irrigation	02 6962 0200

Complying with these notification requirements does not remove the need to comply with any other obligations for incident notification, for example, those that apply under other environment protection legislation or legislation administered by SafeWork NSW.

Internal Incident Reporting Process

Internal incident reports are to be completed for all incidents, near-misses or hazards.

After ensuring the area is secure and the immediate safety of personnel and the environment has been managed, an incident report is to be completed by the relevant person. Once the reporting person and the Farm Manager have reviewed and signed-off on the report, a copy shall be submitted to the Risk Manager. Incidents classed as actual or having the potential to be Catastrophic or Major must be reported to the Chief Executive Officer immediately via telephone.

All Catastrophic and Major ranked incidents must have a full investigation and corrective actions implemented.

External Incident Reporting

A written report will be provided to the EPA within 7 days of the incident.

Legal Privilege

The following points need to be adhered to:

The ProTen Legal Department or External Lawyers will be notified by the Chief Executive Officer to assist with the determination of the process for the granting of Legal Privilege. Some or all forms and documents may need to be marked "subject to legal privilege". The Legal Department in consultation with the Chief Executive Officer will notify if and when documents need to be marked this way.

Notification of external parties as per state or national requirements. This notification must occur in consultation with the Chief Executive Officer.

Investigation team will be selected and directed by Chief Executive Officer. The Chief Executive Officer and Risk Manager (if deemed necessary) will attend the scene as soon as possible and be briefed by the Farm Manager. The team may or may not be requested to submit a preliminary report with 24 hours of the incident.

Only the Chief Executive Officer is permitted to determine and manage the communication with the onsite employees regarding the incident.

Notification of serious injury or fatality to families will be coordinated by the Chief Executive Officer and Risk Manager.

In the event of a Catastrophic ranked incident the scene of the incident shall be preserved in accordance with the legislative requirements.

All inquiries received from media are to be referred to the Chief Executive Officer. No comment is to be made to any member of the media or community on the incident. Comments can only be made by the Chief Executive Officer.

In the event of a Catastrophic ranked incident, internal communications with all ProTen employees will be managed by the Chief Executive Officer. This will be done in a way to ensure employees are kept up to date with the status of the incident.

Hazardous Substances

- Spill containment located on site to be used for small spills.
- Emergency purchase of spill containment kit from local supplier for large spills of more than 100L.
- Equipment undertaking chemical application to be stopped immediately and problem investigated.
- Spills to be absorbed and placed in sealed containers. Authorised disposal agent to be engaged from Wagga Wagga to remove contaminated material.
- Oils to be absorbed using approved spill kit.

Flood or other natural disaster

- Solid material to be removed where possible.
- Emergency clearing of sheds with birds and litter may be undertaken in co-ordination with Baiada to minimise the risk of poultry litter contaminating water ways (Mirrool Creek). Additionally, temporary levee banks may be put in place in consultation with Regulatory Authorities to prevent the entry of flood waters onto site, where permitted.

Engagement of Contractors

- Any required contractors will be engaged via the ProTen Procurement Policy.
- Emergency engagement can be completed via verbal approval from the Risk Manager where people, chickens or the environment is in immediate danger.

Clean up equipment (waste disposal tankers and waste disposal facilities)

Clean up equipment will be used either internally or through Baiada depending on the quantity and type of pollutant. For large amounts of litter, front end loaders and trucks will be arranged through Baiada. A sludge truck is available from Baiada to remove any contaminated slurries.

Staff Training

The requirements of the PIRMP are outlined in the site induction of all new employees and contractors. A Toolbox Talk outlining the key components on the PIRMP was presented to all staff and contractors at the commencement of operations. The objective of this training was to ensure all staff and contractors are aware of the key steps required to respond to and manage a pollution incident. Following a pollution incident, refresher training will be delivered to staff and contractors.

Testing the PIRMP

The PIRMP will be tested every 12 months (in September each year) as per the requirement of the Protection of Environment Operations (POEO)(G) Regulation. The testing of the PIRMP is to be carried out in such a manner as to ensure that the information included in the PIRMP is accurate and up to date, and that the PIRMP is capable of being implemented in a workable and effective manner.

The Hanwood Farms PIRMP was last tested in September 2023.

Testing involved all staff watching a presentation containing an overview of the PIRMP and reporting requirements relating to pollution incidents, followed by all staff completing a quiz on various scenarios which might require reporting under the PIRMP. A sign-off sheet was also completed by all staff members after completing the quiz and signed off by the Farm Manager.

The PIRMP must also be tested within one month of any pollution incident occurring in the course of an activity to which a licence relates. This is to assess, in the light of that incident, whether the information included in the PIRMP is accurate and up to date, and the PIRMP is still capable of being implemented in a workable and effective manner

Since being implemented in August 2013, the PIRMP has not been activated and there have been no pollution incidents.

Plan Availability

A copy of the PIRMP will be located in the following areas:

- Electronic Copy on ProTen internal system.
- Hard copy at each Farm.

Public Availability

A copy of the PIRMP is publicly available on the ProTen website www.proten.com.au. Sections of the plan are available to any person who submits a written request for a copy.

Information to be made available to the public includes:

- Procedures for contacting the relevant authorities.
- Procedures for communicating with the community.

Implementation of the PIRMP

The plan is to be implemented in the case of any pollution incident (as per the description below) and according to the procedures set out in the plan.

Definitions

The POEO Act provides the following definitions:

Pollution – means –

- a) Water pollution, or
- b) Air pollution, or
- c) Noise pollution, or
- d) Land pollution.

Pollution incident - “pollution incident means an incident or set of circumstances during or as a consequence of which there is or is likely to be a leak, spill or other escape or deposit of a substance, as a result of which pollution has occurred, is occurring or is likely to occur. It includes an incident or set of circumstances in which a substance has been placed or disposed of on premises, but it does not include an incident or set of circumstances involving only the emission of any noise”.

A licensee is required to notify the relevant regulatory authorities of a pollution incident if there is a risk of ‘material harm to the environment’, which is defined in section 147 of the POEO Act as:

- a) harm to the environment is material if:
 - i. it involves actual or potential harm to the health or safety of human beings or to ecosystems that is not trivial, or
 - ii. it results in actual or potential loss or property damage of an amount, or amounts in aggregate, exceeding \$10,000 (or such other amount as is prescribed by the regulations), and

loss includes the reasonable costs and expenses that would be incurred in taking all reasonable and practicable measures to prevent, mitigate or make good harm to the environment.

(2) For the purposes of this Part, it does not matter that harm to the environment is caused only in the premises where the pollution incident occurs.

Appendix 1 – Chemical Register

Farm 53 - CHEMICAL REGISTER

UPDATED: 2/05/2024

General Use

Product	Description	Preferred Supplier	Hazardous Substance (Y/N)	Dangerous Goods Class	Poisons Standard (SUSMP)	SDS expiry Date	UN#	APVMA#	Unit Weight	Maximum Stock Qty	Storage Location	Usage
Agriquat	Disinfectant	Seajay industries	Y	N/A	S6	1/02/2027	N/A	41450	20 L	40 L	Chemical Shed	Sanitation of Cool Cell Sumps
Amoxicillin Trihydrate	Medication Treatment	Baiada	N	N/A	S4	15/12/2026	N/A	N/A	1kg	60kg	Chemical Shed	Treatment of diseases in poultry
Apparent Axeman 600	Group 1 Herbicide	AIRR Apparent PtyLtd	Y	9 (PG III)	S6	31/05/2026	3082	66727	20 L	40 L	Chemical Shed	Control of Weeds
Apparent Concussion 540	Herbicide	Griffith Feed and Grain	Y	3 (PG III)	N/A	3/11/2027	1170	N/A	20	50 L	Chemical Shed	Control of Weeds
Apparent Oxyfluorfen 240 Herbicide	Broadleaf Herbicide	Griffith Feed and Grain	Y	N/A	S6	21/08/2026	N/A	56310	5 L	10 L	Chemical Shed	Control of broadleaf weeds
Apparent Paraquat 250	Herbicide	Griffith Feed and Grain	Y	8 (PG III)	S7	1/06/2026	2922	66103	20L	40L	Chemical Shed	Control of broadleaf weeds
Barmac Out of Bounds	Insecticide and Termiticide	Griffith Feed and Grain	Y	N/A	S6	1/03/2026	N/A	65703	5 L	5L	Chemical Shed	Control of Spiders and Insects
BeetleBETA	Insecticide spray for litter beetle	Meyers	Y	NA	S6	20/07/2026	NA	66448	1L	NA	Chemical Shed <i>Temporary storage during cleanout</i>	Sprayed on empty sheds to Control litter beetle
Citric Acid 50%	Ph reduction	Integra	Y	N/A	N/A	4/06/2025	N/A	N/A	1000 L	1000 L	Pump shed	Water pH buffering
Clearflox	Water Treatment	Integra	N	NA	NA	22/06/2025	NA	NA	1000 L	1000 L	Pump shed	Wastewater Treatment
CTC-ECO Oral Powder	Medication Treatment	Biaiada	N	N/A	S4	1/11/2024	N/A	N/A			Chemical Shed	Treatment of diseases in poultry
Diesel	Automotive Diesel Fuel	Yenda Producers	Y	9 (PG III)	C1	13/10/2025	3082	N/A	AGT 500L AGT 500L	Total for site=1000 L	Generators	Fuel for tractor and generators
Ditrac All Weather Blox	Rodenticide Blocks	Griffith Feed and Grain	N	N/A	S6	1/02/2025	NA	49867	8 kg Buckets	80 kg	Chemical Shed	Control of rodents
Elector PSP	Pesticide	Elanco	N	N/A	N/A	23/11/2028	3082	N/A	1L	N/A	Chemical Shed <i>Temporary storage during cleanout</i>	Sprayed on empty sheds to Control litter beetle
Formaldehyde	Disinfectant Germicide	Meyers	Y	8 (PG III)	S6	1/02/2027	2209	52611	20L	N/A	Chemical Shed <i>Temporary storage during cleanout</i>	Fogging Sheds
FulaFoam Expand Foam	Adhesive	Collier and Miller	N	2.1	NA	8/02/2026	1950	N/A	750gmm	10x750gm	Workshop/Storage	Adhesive for filling in gaps
Glutachem Sanitiser	Disinfectant	Meyers	Y	8 (PG II)	N/A	3/08/2026	1760	61656	20L	N/A	Chemical Shed <i>Temporary storage during cleanout</i>	Sanitising Sheds before placement
Glutaplus Sanitiser	Disinfectant	Meyers	Y	N/A	N/A	3/08/2026	N/A	N/A	20L	N/A	Chemical Shed <i>Temporary storage during cleanout</i>	Sanitising Sheds before placement
Glycine Reagent 10% Solution	Water Analysis	Griffith Feed and Grain	N	NA	NA	10/08/2026	NA	NA	100ml	100ml	Office	Checking Chlorine levels in water
Glyphosate 450 Herbicide	Herbicide	Titan	Y	N/A	S5	27/05/2027	N/A	N/A	25L	50L	Chemical Shed	Control of Weeds
Keymix Keyelectrolytes	Eylectrolyte	Baiada	N	NA	NA	23/12/2027	NA	NA	25kg	25kg	Workshop/Storage	Eylectrolyte Replacer

Product	Description	Preferred Supplier	Hazardous Substance (Y/N)	Dangerous Goods Class	Poisons Standard (SUSMP)	SDS expiry Date	UN#	APVMA#	Unit Weight	Maximum Stock Qty	Storage Location	Usage
Larvabeta	Insecticide spray for litter beetle	Meyers	Y	NA	S6	20/07/2026	NA	84858	1L	NA	Chemical Shed <i>Temporary storage during cleanout</i>	Sprayed on empty sheds to Control litter beetle
Mouseoff Bromadiolone	Rodent Wax block	Griffith Feed and Grain	N	N/A	S6	7/06/2026	N/A	64931	8 kg Buckets	80 kg	Chemical Shed	Control of rodents
Mouseoff Zinc Phosphide	Rodenticide Grain bait	Griffith Feed and Grain	Y	NA	S7	9/08/2026	NA	50532	15kg buckets	125kg	Chemical Shed	Control of rodents
Muskil	Rodenticide Blocks	Griffith Feed and Grain	Y	NA	S6	1/09/2027	NA	69994	8kg Bucket	100kg	chemical Shed	Control of rodents
Natural Gas	Gas	AGL	Y	2.1	N/A	31/01/2025	1972	N/A	N/A	N/A	Main line	Heating sheds
Pestmaster Rat and Mouse Killer	Wax blocks	Griffith Feed and Grain	N	N/A	S6	1/01/2026	N/A	68122	8 kg Buckets	80 kg	Chemical Shed	Control of Weeds
Polyphen	Cleaning Product	Seejay Industries	N	N/A	S6	1/02/2027	N/A	NA	20L	80ltres	Chemical Shed & Footdip containers	Footbaths
Protosan	Sanitiser – Sheds	Meyers	N	N/A	S6	1/02/2027	N/A	39774	20L	N/A	Chemical Shed <i>Temporary storage during cleanout</i>	Spraying inside sheds between batches
Proxitane	Disinfectant	Griffith Feed and Grain	Y	5.1 (PG II)	S6	22/05/2028	3149	47399	20 L	40L	Chemical Shed <i>Temporary storage during cleanout</i>	Sanitising Drinker lines
Ratshot Blue Blocks	Rodenticide Blocks	Griffith Feed and Grain	N	N/A	N/A	30/11/2026	N/A	68762	10kg Buckets	100kg	Chemical Shed	Control of rodents
Ratshot Red Blocks	Rodenticide Blocks	Griffith Feed and Grain	N	N/A	NA	30/11/2026	N/A	69209	10kg Buckets	N/A	Chemical Shed	Control of rodents
Round Up Ultra Max	Herbicide	Griffith Feed and Grain	Y	3 (PG III)	N/A	8/11/2026	1170	68506	25 L	25 L	Chemical Shed	Control of Weeds
Sanimist	Hand Sanitiser	Rapid Clean	Y	2A	N/A	12/03/2025	1170	N/A	5 ltrs	20 ltrs	Every entrance/Office	Refill chemical for Sanitiser pumps for hand sanitising prior to entry to farm or sheds
Sanitary Grains	Sanitiser for Sanitary Bins	Rapid Clean	N	N	NA	1/11/2025	N/A	N/A	4kg	10kg	Amenities Block	Sanitiser for Sanitary Bins
Sodium Hypochlorite 12.5%	Liquid Chlorine	Integra	Y	8	N/A	10/06/2025	1791	88600	200 L	800 L	Water Treatment Room	Water Sanitation
Surefire Difenate All Weather Blocks	Rodenticide Blocks	Griffith Feed and Grain	N	N/A	S6	12/10/2025	N/A	N/A	8kg	40kg	Chemical Shed	Control of rodents
Total Kleen	General Cleaner – Washing Sheds	Meyers	N	N/A	S5	1/02/2027	N/A	N/A	25L	N/A	Chemical Shed <i>Temporary storage during cleanout</i>	Detergent for washing sheds between batches
Twin Oxide 0.3% Solution	Chlorine Dioxide	Integra	N	N/A	N/A	11/11/2024	N/A	N/A	NA	2200L	Bulk Tank - Chemical Shed and Water Treatment Room	Water Sanitation
Unleaded Fuel	Unleaded Fuel	ExxonMobil	Y	3 (PG I)	S5	13/10/2025	1203	N/A	20L	20L	Workshop	Fuel for farm equipment
Virogard	Sanitiser	Meyers	Y	NA	NA	11/10/2024	NA	61658	20L	NA	Chemical Shed <i>Temporary storage during cleanout</i>	Sanitising shed floors in clean out
Virukill	Sanitiser	Griffith Feed and Grain	Y	NA	NA	11/06/2025	NA	50860	20 L	80ltres	Chemical Shed	Sanitation of equipment and wheels, Cool Cell Sumps
Purell Antiseptic Hand foam	Hand sanitiser	Rapid Clean	Y	N/A	N/A	3/12/2025	1987	68355	500ml	25L	Every entrance/Office	Sanitising hands prior to entry to farm and sheds

NB. All other Substances may only be kept in minor quantities of less than 5L or 5kg. Any quantity above this will be required to be approved and added to the Chemical Register

Farm 56 - CHEMICAL REGISTER

UPDATED:

9/08/2024

General Use

Note: Certain Farms may use some or all chemicals below dependant on their set-up and requirements

Product	Description	Preferred Supplier	Hazardous Substance (Y/N)	Dangerous Goods Class	Poisons Standard (SUSMP)	SDS expiry Date	UN#	APVMA#	Unit Weight	Maximum Stock Qty	Storage Location	Usage
Agriquat	Disinfectant	Seajay industries	Y	N/A	S6	1/02/2027	N/A	41450	20 L	40 L	Chemical Shed	Sanitation of Cool Cell Sumps
Amoxicillin Trihydrate	Medication Treatment	Baiada	N	S4	N/A	15/12/2026	N/A	N/A	1kg	60kg	Chemical Shed	Treatment of diseases in poultry
Apparent Concussion 540	Herbicide	Griffith Feed and Grain	Y	N/A	N/A	3/11/2027	N/A	80392	20 L	40 L	Chemical Shed	Weed control
Apparent 2,4-D Ester 680	Herbicide	Griffith Feed and Grain	N	9 (PG III)	S6	18/08/2028	3082	65153	20 L	40 L	Chemical Shed	Weed control
Apparent Oxyfluorfen 240	Herbicide	Griffith Feed and Grain	Y	9 (PG III)	S5	25/08/2026	3082	66891	20L	20L	Chemical Shed	Weed control
Apparent Paraquat 250	Herbicide	Griffith Feed and Grain	Y	8 (PG III)	S7	1/06/2026	2922	66103	20L	40L	Chemical Shed	Control of broadleaf weeds
Apparent Wetter MCPA750	Group4 Herbicide	Apparent Pty Ltd	Y	N/A	N/A	1/11/2026	3082	68355	5 ltrs	5 ltrs	Chemical Shed	Wetting Agent
Barmac Out of Bounds	Insecticide and Termiteicide	Griffith Feed and Grain	Y	N/A	S6	1/03/2026	N/A	65703	5 L	5L	Chemical Shed	Control of Spiders and Insects
BeetleBETA	Insecticide spray for litter beetle	Meyers	Y	NA	S6	20/07/2026	NA	66448	1L	NA	Chemical Shed Temporary storage during cleanout	Sprayed on empty sheds to Control litter beetle
Citric Acid	Ph reduction	Integra	Y	N/A	N/A	4/06/2025	N/A	N/A	1000 L	1000 L	Pump shed	Water pH buffering
CTC-ECO Oral Powder	Medication Treatment	Baiada	N	N/A	S4	1/11/2024	N/A	N/A	500g	100kg	Chemical Shed	Treatment of diseases in poultry
Diesel	Automotive Diesel Fuel	Yenda Producers	Y	9 (PG III)	C1	13/10/2025	3082	N/A	Generator 1 - 500L	Total for site = 500L	Generator	Fuel for tractor and generators
Ditrac All Weather Blox	Rodenticide Blocks	Griffith Feed and Grain	N	N/A	S6	1/01/2025	NA	49867	8 kg Buckets	80 kg	Chemical Shed	Control of rodents
Elector PSP	Pesticide	Elanco	N/A	N/A	N/A	23/11/2028	3082	N/A	1L	N/A	Chemical Shed Temporary storage during cleanout	Sprayed on empty sheds to Control litter beetle
Formaldehyde	Disinfectant Germicide	Meyers	Y	8 (PG III)	S6	1/02/2027	2209	52611	20L	N/A	Chemical Shed Temporary storage during cleanout	Fogging Sheds
FulaFoam Expand Foam	Adhesive	Collier and Miller	N	2.1	NA	8/02/2026	1950	N/A	750gmm	10x750gm	Workshop	Adhesive for filling in gaps
Glutachem Sanitiser	Disinfectant	Meyers	Y	8 (PG II)	NA	3/08/2026	1760	61656	20L	N/A	Chemical Shed Temporary storage during cleanout	Sanitising Sheds before placement
Glutaplus Sanitiser	Disinfectant	Meyers	Y	N/A	NA	3/08/2026	N/A	N/A	20L	N/A	Chemical Shed Temporary storage during cleanout	Sanitising Sheds before placement
Glycine Reagent 10% Solution	Water Analysis	Griffith Feed and Grain	N	NA	NA	10/08/2026	NA	NA	100ml	100ml	Office	Checking Chlorine levels in water
Glyphosate 450 Herbicide	Herbicide	Titan	Y	N/A	S5	27/05/2027	N/A	N/A	25L	50L	Chemical Shed	Control of Weeds
Keymix Keyelectrolytes	Eylectrolyte	Baiada	N	NA	NA	23/12/2027	NA	NA	25kg	25kg	Workshop/Storage	Eylectrolyte Replacer
Larvabeta	Insecticide spray for litter beetle	Meyers	Y	NA	S6	20/07/2026	NA	84858	1L	NA	Chemical Shed Temporary storage during cleanout	Sprayed on empty sheds to Control litter beetle
Mouseoff Bromadiolone	rodent Wax block	Griffith Feed and Grain	N	N/A	S6	7/05/2026	N/A	64931	8 kg Buckets	80 kg	Chemical Shed	Control of rodents

Product	Description	Preferred Supplier	Hazardous Substance (Y/N)	Dangerous Goods Class	Poisons Standard (SUSMP)	SDS expiry Date	UN#	APVMA#	Unit Weight	Maximum Stock Qty	Storage Location	Usage
Mouseoff Zinc Phosphide	Rodenticide Grain bait	Griffith Feed and Grain	Y	NA	S7	9/05/2026	NA	50532	15kg buckets	125kg	Chemical Shed	Control of rodents
Natural Gas	Gas	AGL	Y	2.1	N/A	31/01/2025	1972	N/A	N/A	N/A	Main line	Heating sheds
Pestmaster Rat and Mouse Killer	Wax blocks	Griffith Feed and Grain	N	N/A	S6	1/01/2026	N/A	68122	8 kg Buckets	80 kg	chemical shed	Control of Weeds
Polyphen	Cleaning Product	Seejay industries	N/A	N/A	S6	1/02/2027	N/A	NA	20L	80ltres	Chemical Shed & Footdip containers	Footbaths
Protosan	Sanitiser – Sheds	Meyers	N/A	N/A	S6	1/02/2027	N/A	39774	20L	N/A	Chemical Shed <i>Temporary storage during cleanout</i>	Spraying inside sheds between batches
Proxitane	Disinfectant	Griffith Feed and Grain	Y	5.1 (PG II)	S6	22/05/2028	3149	47399	20 L	40L	Chemical Shed <i>Temporary storage during cleanout</i>	Sanitising Drinker lines
Ratshot Blue Blocks	Rodenticide Blocks	Griffith Feed and Grain	N	N/A	N/A	30/11/2026	N/A	68762	10kg Buckets	100kg	Chemical Shed	Control of rodents
Ratshot Red Blocks	Rodenticide Blocks	Griffith Feed and Grain	N	N/A	NA	30/11/2026	N/A	69209	10kg Buckets	N/A	Chemical Shed	Control of rodents
Round Up Ultra Max	Herbicide	Griffith Feed and Grain	Y	9 (PG III)	S5	8/11/2026	1170	N/A	25 L	50 L	Chemical Shed	Control of Weeds
Sanitary Grains	Sanitiser for Sanitary Bins		N	N	NA	1/11/2025	N/A	N/A	4kg	10kg	Amenities Block	Sanitiser for Sanitary Bins
Sanimist	Hand Sanitiser	Rapid Clean	Y	2A	N/A	12/03/2025	1170	N/A	5 ltrs	20 ltrs	Every entrance/Office	Refill chemical for Sanitiser pumps for hand sanitising prior to entry to farm or sheds
Sodium Hypochlorite 12.5%	Liquid Chlorine	Integra	Y	8	N/A	10/06/2025	1791	TSCA Inventory	200 L	800 L	Water Treatment Room	Water Sanitation
Stricker Hericide	Herbicide	Griffith Feed and Grain	Y	9 (PG III)	S5	5/04/2028	3082	59090	5L	10L	Chemical Shed	Control of Weeds
Surefire Difenate All Weather Blocks	Rodenticide Blocks	Griffith Feed and Grain	N	N/A	S6	12/10/2025	N/A	69911	10kg Buckets	100kg	Chemical Shed	Control of rodents
Total Kleen	General Cleaner – Washing Sheds	Meyers	N/A	N/A	S5	1/02/2027	N/A	N/A	25L	N/A	Chemical Shed <i>Temporary storage during cleanout</i>	Detergent for washing sheds between batches
Twin Oxide 0.3%	Chlorine Dioxide	Integra	N	N/A	N/A	11/11/2024	N/A	N/A	NA	2200L	Bulk Tank - Chemical Shed and Water Treatment Room	Water Sanitation
Unleaded Fuel	Unleaded Fuel	ExxonMobil	Y	3 (PG I)	S5	13/10/2025	1203	N/A	20L	20L	Workshop	Fuel for farm equipment
Virukill	Sanitiser	Griffith Feed and Grain	Y	NA	NA	11/06/2025	NA	50860	20 L	80ltres	Chemical Shed	Sanitation of equipment and wheels, Cool Cell Sumps

NB. All other Substances may only be kept in minor quantities of less than 5L or 5kg. Any quantity above this will be required to be approved and added to the Chemical Register

Farm 64 - CHEMICAL REGISTER

UPDATED:

18/06/2024

General Use

Product	Description	Preferred Supplier	Hazardous Substance (Y/N)	Dangerous Goods Class	Poisons Standard (SUSMP)	SDS expiry Date	UN#	APVMA#	Unit Weight	Maximum Stock Qty	Storage Location	Usage
Adama MCPA 750	Group 1 Herbicide	Collier and Miller	Y	Y	S6	1/05/2026	3082	63191	20L	40L	Chemical Shed	Control of weeds
Amoxicillin Trihydrate	Medication Treatment		N	N/A	S4	15/12/2026	N/A	N/A	1kg	60kg	Chemical Shed	Treatment of diseases in poultry
Apparent Concussion 540	Herbicide	Griffith Feed and Grain	Y	N/A	N/A	3/11/2027	N/A	80392	20 L	40 L	Chemical Shed	Weed control
Apparent Oxyfluorfen 240 Herbicide	Broadleaf Herbicide	Griffith Feed and Grain	Y	N/A	S6	21/08/2026	N/A	56310	5 L	10 L	Chemical Shed	Control of broadleaf weeds
Apparent Wetter 1000	Wetting agent	Griffith Feed and Grain	Y	N/A	NA	30/11/2026	NA	67008	20L	20L	Chemical Shed	Wetting agent for use with herbicides
Barmac Out of Bounds	Insecticide and Termiteicide	Griffith Feed and Grain	Y	N/A	S6	1/03/2026	N/A	65703	5 L	5L	Chemical Shed	Control of Spiders and Insects
BeetleBETA	Insecticide spray for litter beetle	Meyers	Y	NA	S6	20/07/2026	NA	66448	1L	NA	Chemical Shed <i>Temporary storage during cleanout</i>	Sprayed on empty sheds to Control litter beetle
Citric Acid	Ph reduction	Integra	Y	N/A	N/A	4/06/2025	N/A	N/A	500L	500L	Pump shed	Water pH buffering
CTC-ECO Oral Powder	Medication Treatment	Biaiada	N	N/A	S4	1/11/2024	N/A	N/A	1kg	60kg	Chemical Shed	Treatment of diseases in poultry
Diesel	Automotive Diesel Fuel	Caltex	Y	C1	S5	13/10/2025	3082	N/A	AGT 600L	600L	Generator	Fuel for tractor and generators
Elector PSP	Pesticide	Elanco	N/A	N/A	N/A	23/11/2028	3082	59422	1L	N/A	Chemical Shed <i>Temporary storage during cleanout</i>	Sprayed on empty sheds to Control litter beetle
Formaldehyde	Disinfectant Germicide	Meyers	Y	8 (PG III)	S6	1/02/2027	2209	61653	20L	N/A	Chemical Shed <i>Temporary storage during cleanout</i>	Fogging Sheds
FulaFoam Expand Foam	Adhesive	Collier and Miller	N	2.1	NA	8/02/2026	1950	N/A	750gmm	10x750gm	Workshop	Adhesive for filling in gaps
Glutachem	Sanitiser – Sheds	Meyers	Y	8 (PG II)	NA	3/08/2026	1760	61656	20L	NA	Chemical Shed <i>Temporary storage during cleanout</i>	Spraying inside sheds between batches
Glutaplus	Additive to Glutachem	Meyers	Y	NA	NA	3/08/2026	NA	NA	5L	NA	Chemical Shed <i>Temporary storage during cleanout</i>	Additive to Glutachem
Glycine Reagent 10% Solution	Water Analysis	Griffith Feed and Grain	N	NA	NA	10/08/2026	NA	NA	100ml	100ml	Office	Checking Chlorine levels in water
Glyphosate 450 Herbicide	Herbicide	Titan	Y	N/A	S5	27/05/2027	N/A	N/A	25L	50L	Chemical Shed	Control of Weeds
Hand Sanitiser 70% alcohol	Sanitiser	Rapid Clean	Y	N	S6	14/12/2025	1075	NA	500ml	25L	Shed entrance/Office	Sanitising hands prior to entry to farm and sheds

Product	Description	Preferred Supplier	Hazardous Substance (Y/N)	Dangerous Goods Class	Poisons Standard (SUSMP)	SDS expiry Date	UN#	APVMA#	Unit Weight	Maximum Stock Qty	Storage Location	Usage
HY-Clor Long Lasting Swimming Pool Tablets	Water sanitation	Integra	Y	5.1(PG III)	S6	25/08/2026	2468	56112	2kg	4kg	Pump shed	Water sanitation
Keymix Keyelectrolytes	Eylectrolyte	Baiada	N	NA	NA	23/12/2027	NA	NA	25kg	25kg	Workshop/Storage	Eylectrolyte Replacer
Larvabeta	Insecticide spray for litter beetle	Meyers	Y	NA	S6	20/07/2026	NA	84858	1L	NA	Chemical Shed <i>Temporary storage during cleanout</i>	Sprayed on empty sheds to Control litter beetle
LPG	Liquefied Petroleum Gas	Elgas	Y	N	S6	1/09/2028	NA	68355	45,000 L	6 x 7500litre Tanks	Depot 1 Above Ground Tank	Heating sheds
Mouseoff Bromodialone Rodent Block	Rodenticide bait	Griffith Feed and Grain	N	NA	S6	7/06/2026	NA	51245	10kg buckets	70kg	Chemical Shed	Control of rodents
Mouseoff Zinc Phosphide	Rodenticide Grain bait	Griffith Feed and Grain	Y	NA	S7	9/08/2026	NA	50532	15kg buckets	125kg	Chemical Shed	Control of rodents
Oomph Hand sanitiser	Hand Sanitiser	Griffith Feed and Grain	Y	Y	S6	3/05/2025	3082	NA	5L	10L	Storage Cupboard	Refill chemical for Sanitiser pumps for hand sanitising prior to entry to farm or sheds
Oxyfluorfen 240	Broadleaf Herbicide	Griffith Feed and Grain	Y	N/A	S6	1/02/2026	N/A	56310	5 L	10 L	Chemical Shed	Control of broadleaf weeds
Pestmaster Rat & Mouse Wax blocks	Rodenticide Blocks	Griffith Feed and Grain	Y	NA	S6	1/01/2026	NA	68122	15kg	100kg	Chemical Shed	Control of rodents
Polyphen	Cleaning Product	Seejay industries	N/A	N/A	S5	1/02/2027	N/A	47097	20L	60L (NB. Additional volumes stored on farm during cleanout)	Chemical Shed & Footdip containers	Footbaths
Protosan	Sanitiser – Sheds	Meyers	N/A	N/A	S6	1/02/2027	N/A	39774	20L	N/A	Chemical Shed <i>Temporary storage during cleanout</i>	Spraying inside sheds between batches
Proxitane	Disinfectant	Griffith Feed and Grain	Y	5.1 (PG II)	S6	22/05/2028	3149	47399	20 L	40L	Chemical Shed <i>Temporary storage during cleanout</i>	Sanitising Drinker lines
Ratshot Blue Blocks	Rodenticide Blocks	Griffith Feed and Grain	N	N/A	N/A	30/11/2026	N/A	68762	10kg Buckets	100kg	Chemical Shed	Control of rodents
Ratshot Red Blocks	Rodenticide Blocks	Griffith Feed and Grain	N	N/A	NA	30/11/2026	N/A	69209	10kg Buckets	100kg	Chemical Shed	Control of rodents
Round Up Ultra Max	Herbicide	Griffith Feed and Grain	Y	9 (PG III)	S5	8/11/2026	1170	N/A	25 L	50 L	Chemical Shed	Control of Weeds
Sanitary Grains	Sanitiser for Sanitary Bins		N	N	NA	1/11/2025	N/A	N/A	4kg	10kg	Amenities Block	Sanitiser for Sanitary Bins
Stricker Hercide	Herbicide	Griffith Feed and Grain	Y	9 (PG III)	S5	5/04/2028	3082	59090	5L	10L	Chemical Shed	Control of Weeds
Surefire Difenate All Weater Blocks	Rodenticide Blocks	Griffith Feed and Grain	N	N/A	S6	12/10/2025	N/A	N/A	8kg	40kg	Chemical Shed	Control of rodents

Product	Description	Preferred Supplier	Hazardous Substance (Y/N)	Dangerous Goods Class	Poisons Standard (SUSMP)	SDS expiry Date	UN#	APVMA#	Unit Weight	Maximum Stock Qty	Storage Location	Usage
Total Kleen	General Cleaner – Washing Sheds	Meyers	N/A	N/A	S5	28/02/2027	N/A	N/A	25L	N/A	Chemical Shed <i>Temporary storage during cleanout</i>	Detergent for washing sheds between batches
Twin Oxide 0.3% Solution	Chlorine Dioxide	Integra	N	NA	NA	12/11/2024	NA	N/A	1000L	1000L	Bulk Tank - Pump Shed	Water Sanitation
Unleaded Fuel	Unleaded Fuel	Yenda Producers	Y	3 (PG II)	S5	13/10/2025	1203	N/A	20L	20L	Workshop	Fuel for farm equipment
Viragard	Sanitiser	Meyers	Y	NA	NA	11/10/2024	NA	61658	20L	NA	Chemical Shed <i>Temporary storage during cleanout</i>	Sanitising shed floors in clean out
Virukill	Sanitiser	Griffith Feed and Grain	Y	NA	NA	11/06/2025	NA	50860	20 L	40L	Chemical Shed and Wheel Wash	Sanitation of equipment and wheels, Cool Cell Sumps

NB. All other Substances may only be kept in minor quantities of less than 5L or 5kg. Any quantity above this will be required to be approved and added to the Chemical Register

Farm 67 - CHEMICAL REGISTER

UPDATED: 30/04/2024

General Use

Note: Certain Farms may use some or all chemicals below dependant on their set-up and requirements

Product	Description	Preferred Supplier	Hazardous Substance (Y/N)	Dangerous Goods Class	Poisons Standard (SUSMP)	SDS expiry Date	UN#	APVMA#	Unit Weight	Maximum Stock Qty	Storage Location	Usage
ADAMA MCPA 750 selective Herbicide	Herbicide	Adam Australia	Y	9	S6	18/10/2026	3082	53893	5L	5L	Chemical Shed	Control of Weeds
Agriquat	Disinfectant	Seajay Industries	Y	N/A	S6	1/02/2027	N/A	41450	20 L	40 L	Chemical Shed	Sanitation of Cool Cell Sumps
Amoxicillin Trihydrate	Medication Treatment	Baiada	N	S4	N/A	15/12/2026	N/A	N/A	1kg	60kg	Chemical Shed	Treatment of diseases in poultry
Apparent Concussion 540	Herbicide	Griffith Feed and Grain	Y	N/A	N/A	3/11/2027	N/A	80392	20 L	40 L	Chemical Shed	Weed control
Apparent Paraquat 250	Herbicide	Griffith Feed and Grain	Y	8 (PG III)	S7	1/06/2026	2922	66103	20L	40L	Chemical Shed	Control of broadleaf weeds
Apparent Wetter	Wetting Agent	Griffith Feed and Grain	Y	N/A	N/A	18/10/2026	N/A	67008	5 ltrs	10 ltrs	Chemical Shed	Wetting Agent
Barmac Out of Bounds	Insecticide and Termiticide	Griffith Feed and Grain	Y	N/A	S6	1/03/2026	N/A	65703	5 L	5L	Chemical Shed	Control of Spiders and Insects
BeetleBETA	Insecticide spray for litter beetle	Meiers	Y	NA	S6	20/07/2026	NA	66448	1L	NA	Chemical Shed <i>Temporary storage during cleanout</i>	Sprayed on empty sheds to Control litter beetle
Beltgrip	BELT GRIP • TACKIFIER	Collier and Miller	Y	2.1	S5	31/07/2025	1950	N/A	400gm	3x400gm	Workshop	Revives old belts/Stops belt slipping
Castol Agri Grease	lubricant	Collier and Miller	N	NA	NA	9/04/2025	NA	NA	450g	12x450g	Workshop	Greasing machinery
Castrol Garden 2T	2-stroke oil	Collier and Miller		NA	NA	16/08/2028	NA	NA	1L	1L	Workshop	2-stroke oil for 2-stroke fuel mix in Farm equipment
Castrol Magnatec Diesel 15W-40 Oil	Tractor Engine Oil	Collier and Miller	N	NA	NA	24/11/2028	NA	NA	5L	10L	Workshop	Engine oil for Powered Mobile plant
Castrol Premium Cool Plus 50	Coolant	Collier and Miller	Y	9 (PG III)	S5	29/07/2026	3082	68506	20 L	20L	Workshop	Coolant for vehicles
Castrol Spherol SX 2	Grease	Collier and Miller	Y	NA	NA	16/08/2028	NA	NA	450g	5x450g	Workshop	Greasing machinery
Castrol Universal 80W-90	Gear Lubricant	Collier and Miller	N	NA	NA		NA	NA	5L	10L	Workshop	Automotive Gear Lubricant
Citric Acid	Ph reduction	Integra	Y	N/A	N/A	4/06/2025	N/A	N/A	1000 L	1000 L	Pump shed	Water pH buffering
CRC 5.56	lubricant/Penetrant	Collier and Miller	Y	2.1	N/A	29/05/2028	1950	N/A	400gm	3x400gm	Workshop	Lubricant
Crucial	Herbicide	Griffith Feed and Grain	N	9	S5	18/11/2026	N/A	N/A	20L	20L	Chemical Shed	Control of Perennial weeds
CTC-ECO Oral Powder	Medication Treatment	Baiada	N	N/A	S4	1/11/2024	N/A	N/A	1kg	60kg	Chemical Shed	Treatment of diseases in poultry
Diesel	Automotive Diesel Fuel	Yenda Producers	Y	9 (PG III)	C1	13/10/2025	3082	N/A	Generator 1 450L Generator 2 330L	Total for site = 780L	Generators Rear of farmoppiste shed 6&7	Fuel for tractor and generators
Elector PSP	Pesticide	Elanco	N/A	N/A	N/A	23/11/2028	3082	N/A	1L	N/A	Chemical Shed <i>Temporary storage during cleanout</i>	Sprayed on empty sheds to Control litter beetle
FulaFoam Expand Foam	Adhesive	Collier and Miller	N	2.1	NA	8/02/2026	1950	N/A	750gmm	10x750gm	Workshop	Adhesive for filling in gaps

Product	Description	Preferred Supplier	Hazardous Substance (Y/N)	Dangerous Goods Class	Poisons Standard (SUSMP)	SDS expiry Date	UN#	APVMA#	Unit Weight	Maximum Stock Qty	Storage Location	Usage
Formaldehyde	Disinfectant Germicide	Meyers	Y	8 (PG III)	S6	1/02/2027	2209	52611	20L	N/A	Chemical Shed <i>Temporary storage during cleanout</i>	Fogging Sheds
Glutachem Sanitiser	Disinfectant	Meyers	Y	8 (PG II)	NA	3/08/2026	1760	61656	20L	N/A	Chemical Shed <i>Temporary storage during cleanout</i>	Sanitising Sheds before placement
Glutaplus Sanitiser	Disinfectant	Meyers	Y	N/A		3/08/2026	N/A	N/A	20L	N/A	Chemical Shed <i>Temporary storage during cleanout</i>	Sanitising Sheds before placement
Glycine Reagent 10% Solution	Water Analysis	Griffith Feed and Grain	N	NA	NA	10/08/2026	NA	NA	100ml	100ml	Office	Checking Chlorine levels in water
Glyphosate 450 Herbicide	Herbicide	Titan	Y	N/A	S5	27/05/2027	N/A	N/A	25L	50L	Chemical Shed	Control of Weeds
Keymix Keyelectrolytes	Eylectrolyte	Baiada	N	NA	NA	23/12/2027	NA	NA	25kg	25kg	Workshop/Storage	Eylectrolyte Replacer
Kubota UDT	Tractor Engine Oil	Collier and Miller	N	NA	NA	3/08/2027	NA	NA	20L	20L	Workshop	Engine oil for Powered Mobile plant
Larvabeta	Insecticide spray for litter beetle	Meyers	Y	NA	S6	20/07/2026	NA	84858	1L	NA	Chemical Shed <i>Temporary storage during cleanout</i>	Sprayed on empty sheds to Control litter beetle
LPG	Liquefied Petroleum Gas	Elgas	Y	N	S6	1/09/2028	NA	68355	60,000 L	8 x 7500litre Tanks	Depot 1 Above Ground Tank	Heating sheds
Marten/Rodent Repellent	Repellent	Wurth	N	2.1	NA	18/11/2027	1950	NA	150gm	6x150gm	Workshop	Repell Rodents
Mouseoff Bromodialone Rodent Block	Rodenticide bait	Griffith Feed and Grain	N	NA	S6	7/06/2026	NA	51245	10kg buckets	70kg	Chemical Shed	Control of rodents
Mouseoff Zinc Phosphide	Rodenticide Grain bait	Griffith Feed and Grain	Y	NA	S7	9/08/2026	NA	50532	15kg buckets	125kg	Chemical Shed	Control of rodents
Pestmaster Rat and Mouse Killer	Wax blocks	Griffith Feed and Grain	N	N/A	S6	1/01/2026	N/A	68122	8 kg Buckets	80 kg	Chemical Shed	Control of Weeds
Pipemaster Red primer	Primer for solvent cement (PVC)	Collier and Miller	Y	3(PG II)	S5	20/08/2026	1193	N/A	250ml	250ml	Workshop	Primer for PVC pipe
Oxyfluorfen Herbicide	Herbicide	Adam Australia	Y	9	S5	1/02/2026	3082	N/A	5L	5L	Chemical Shed	Control of Weeds
Polyphen	Cleaning Product	Seejay industries	N/A	N/A	S6	1/02/2027	N/A	NA	20L	80ltres	Chemical Shed & Footdip	Footbaths
Proctosan	Sanitiser – Sheds	Meyers	N/A	N/A	S6	1/02/2027	N/A	39774	20L	N/A	Chemical Shed <i>Temporary storage during cleanout</i>	Spraying inside sheds between batches
Proxitane	Disinfectant	Griffith Feed and Grain	Y	5.1 (PG II)	S6	8/11/2026	3149	47399	20 L	40L	Chemical Shed <i>Temporary storage during cleanout</i>	Sanitising Drinker lines
Ratshot Blue Blocks	Rodenticide Blocks	Griffith Feed and Grain	N	N/A	N/A	30/11/2026	N/A	68762	10kg Buckets	100kg	Chemical Shed	Control of rodents
Ratshot Red Blocks	Rodenticide Blocks	Griffith Feed and Grain	N	N/A	NA	30/11/2026	N/A	69209	10kg Buckets	N/A	Chemical Shed	Control of rodents
Round Up Ultra Max	Herbicide	Griffith Feed and Grain	Y	3 (PG III)	N/A	8/11/2026	1170	N/A	25 L	50 L	Chemical Shed	Control of Weeds
Sanitary Grains	Sanitiser for Sanitary Bins		N	N	NA	1/11/2025	N/A	N/A	4kg	10kg	Amenities Block	Sanitiser for Sanitary Bins

Product	Description	Preferred Supplier	Hazardous Substance (Y/N)	Dangerous Goods Class	Poisons Standard (SUSMP)	SDS expiry Date	UN#	APVMA#	Unit Weight	Maximum Stock Qty	Storage Location	Usage
Sodium Hypochlorite 12.5%	Liquid Chlorine	Integra	Y	8	N/A	10/06/2025	1791	88600	200 L	800 L	Water Treatment Room	Water Sanitation
Stricker Hericide	Herbicide	Griffith Feed and Grain	Y	9 (PG III)	S5	5/04/2028	3082	59090	5L	10L	Chemical Shed	Control of Weeds
Surefire Difenate All Weater Blocks	Rodenticide Blocks	Griffith Feed and Grain	N	N/A	S6	12/10/2025	N/A	N/A	8kg	40kg	Chemical Shed	Control of rodents
Total Kleen	General Cleaner – Washing Sheds	Meyers	N/A	N/A	S5	1/02/2027	N/A	N/A	25L	N/A	Chemical Shed <i>Temporary storage during cleanout</i>	Detergent for washing sheds between batches
Twin Oxide Part A 0.3%	Sodium Chlorite	Integra	Y	5.1 (PG II)	S6	13/02/2028	1496	N/A	4kg	N/A	Chemical Shed	Water Sanitation
Twin Oxide Part B 0.3%	Sodium Chlorite	Integra	Y	N/A	S5	13/02/2028	N/A	N/A	4kg	N/A	Chemical Shed	Water Sanitation
Twin Oxide 0.3% Solution	Chlorine Dioxide	Integra	N	NA	NA	11/11/2024	NA	N/A	NA	2200L	Bulk Tank - Chemical Shed and Water Treatment Room	Water Sanitation
Unleaded Fuel	Unleaded Fuel	ExxonMobil	Y	3 (PG I)	S5	13/10/2025	1203	N/A	20L	20L	Workshop	Fuel for farm equipment
Virukill	Sanitiser	Griffith Feed and Grain	Y	NA	NA	11/06/2025	NA	50860	20 L	80ltres	Chemical Shed	Sanitation of equipment and wheels, Cool Cell Sumps

NB. All other Substances may only be kept in minor quantities of less than 5L or 5kg. Any quantity above this will be required to be approved and added to the Chemical Register

Farm 68 - CHEMICAL REGISTER

UPDATED: 2/07/2024

General Use

Product	Description	Preferred Supplier	Hazardous Substance (Y/N)	Dangerous Goods Class	Poisons Standard (SUSMP)	SDS expiry Date	UN#	APVMA#	Unit Weight	Maximum Stock Qty	Storage Location	Usage
Apparent Wetter MCPA750	Herbicide	Griffith Feed and Grain	Y	9 (PG III)	S6	18/10/2026	3082	68355	5 ltrs	10 ltrs	Chemical Shed	Wetting Agent
Apparent Oxyfluorfen 240 Hericide	Herbicide	Griffith Feed and Grain	Y	9 (PG III)	S5	3/11/2027	3082	66891	20L	40L	Chemical Shed	Weed control
Amoxicillin Trihydrate	Medication Treatment	Baiada	N	S4	N/A	15/12/2026	N/A	N/A	1kg	60kg	Workshop/Storage	Treat Amoxyycillin Sensitive Organisms in Poultry
Apparent Paraquat 250	Herbicide	Griffith Feed and Grain	Y	8 (PG III)	S7	1/06/2026	2922	66103	20L	40L	Chemical Shed	Control of broadleaf weeds
Apparent Wetter	Wetting Agent	Griffith Feed and Grain	Y	N/A	N/A	18/10/2026	N/A	67008	5 ltrs	10 ltrs	Chemical Shed	Wetting Agent
Barmac Out of Bounds	Insecticide and Termiteicide	Griffith Feed and Grain	Y	N/A	S6	1/03/2026	N/A	65703	5L	10L	Chemical Shed	Control of Spiders and Insects
BeetleBETA	Insecticide spray for litter beetle	Meyers	Y	N/A	S6	20/07/2026	N/A	66448	1L	NA	Chemical Shed Temporary storage during cleanout	Sprayed on empty sheds to Control litter beetle
CTC-ECO Oral Powder	Medication Treatment	Biaiada	N	N/A	S4	1/11/2024	N/A	N/A	1kg	60kg	Workshop/Storage	Treatment of diseases in poultry
Diesel	Automotive Diesel Fuel	Yenda Producers	Y	9 (PG III)	C1	13/10/2025	3082	N/A	Main Generator 2500L Pit Tank 2500L Sheds 1-12 40L	Total for site = 5480L	Generators	Fuel for tractor and generators
Ditrac All Weather Blox	Rodenticide Blocks	Griffith Feed and Grain	N	N/A	S6	1/01/2025	NA	49867	8 kg Buckets	80 kg	Chemical Shed	Control of rodents
Elector PSP	Pesticide	Elanco	N/A	N/A	N/A	23/11/2028	3082	N/A	1L	N/A	Chemical Shed Temporary storage during cleanout	Sprayed on empty sheds to Control litter beetle
Formaldehyde	Disinfectant Germicide	Meyers	Y	8 (PG III)	S6	1/02/2027	2209	52611	20L	N/A	Chemical Shed Temporary storage during cleanout	Fogging Sheds
FulaFoam Expand Foam	Adhesive	Collier and Miller	N	2.1	NA	8/02/2026	1950	N/A	750gmm	10x750gm	Workshop	Adhesive for filling in gaps
Glutachem Sanitiser	Disinfectant	Meyers	Y	8 (PG II)	NA	3/08/2026	1760	61656	20L	N/A	Chemical Shed Temporary storage during cleanout	Sanitising Sheds before placement
Glutaplus Sanitiser	Disinfectant	Meyers	Y	N/A	NA	3/08/2026	N/A	N/A	20L	N/A	Chemical Shed Temporary storage during cleanout	Sanitising Sheds before placement
Glycine Reagent 10% Solution	Water Analysis	Griffith Feed and Grain	N	NA	NA	10/08/2026	NA	NA	100ml	100ml	Office	Checking Chlorine levels in water
Glyphosate 450 Herbicide	Herbicide	Titan	Y	N/A	S5	27/05/2027	N/A	N/A	25L	50L	Chemical Shed	Control of Weeds
HY-Clor Long Lasting Swimming Pool Tablets	Water sanitation	Integra	Y	5.1(PG III)	S6	20/01/2028	2468	56112	2kg	4kg	Pump shed	Water sanitation
Keymix Keyelectrolytes	Eylectrolyte	Baiada	N	NA	NA	23/12/2027	NA	NA	25kg	25kg	Workshop/Storage	Eylectrolyte Replacer
Larvabeta	Insecticide spray for litter beetle	Meyers	Y	NA	S6	20/07/2026	NA	84858	1L	NA	Chemical Shed Temporary storage during cleanout	Sprayed on empty sheds to Control litter beetle
LPG	Liquefied Petroleum Gas	Elgas	Y	N	S6	1/09/2028	NA	68355	60,000 L	8 x 7500litre Tanks	Depot 1 Above Ground Tank	Heating sheds
Marten/Rodent Repellent	Repellent	Wurth	N	2.1	NA	18/11/2027	1950	NA	150gm	6x150gm	Workshop	Repell Rodents
Mouseoff Bromadioline	rodent Wax block	Griffith Feed and Grain	N	N/A	S6	7/06/2026	N/A	64931	8 kg Buckets	80 kg	Chemical Shed	Control of rodents
Mouseoff Zinc Phosphide	Rodenticide Grain bait	Griffith Feed and Grain	Y	NA	S7	9/08/2026	NA	50532	15kg buckets	125kg	Chemical Shed	Control of rodents
Oxyfluorfen Herbicide (Cavalier)	Herbicide	Adam Australia	Y	9	S5	1/02/2026	3082	N/A	5L	5L	Chemical Shed	Control of Weeds
Pestmaster Rat and Mouse Killer	Wax blocks	Griffith Feed and Grain	N	N/A	S6	1/01/2026	N/A	68122	8 kg Buckets	80 kg	Chemical Shed	Control of Weeds
Polyphen	Cleaning Product	Seejay industries	N/A	N/A	S6	1/02/2027	N/A	NA	20L	80ltres	Chemical Shed & Footdip containers	Footbaths

Product	Description	Preferred Supplier	Hazardous Substance (Y/N)	Dangerous Goods Class	Poisons Standard (SUSMP)	SDS expiry Date	UN#	APVMA#	Unit Weight	Maximum Stock Qty	Storage Location	Usage
Protosan	Sanitiser – Sheds	Meyers	N/A	N/A	S6	1/02/2027	N/A	39774	20L	N/A	Chemical Shed <i>Temporary storage during cleanout</i>	Spraying inside sheds between batches
Proxitane	Disinfectant	Griffith Feed and Grain	Y	5.1 (PG II)	S6	22/05/2028	3149	47399	20 L	40L	Chemical Shed <i>Temporary storage during cleanout</i>	Sanitising Drinker lines
Ratshot Blue Blocks	Rodenticide Blocks	Griffith Feed and Grain	N	N/A	N/A	30/11/2026	N/A	68762	10kg Buckets	100kg	Chemical Shed	Control of rodents
Ratshot Red Blocks	Rodenticide Blocks	Griffith Feed and Grain	N	N/A	NA	30/11/2026	N/A	69209	10kg Buckets	N/A	Chemical Shed	Control of rodents
Rodent Repellent	Rodent Protection Spray	Wurth	N	Y		18/11/2027	1950	N/A	150gm	1500gm	Workshop	Repellent for Rodents
Round Up Ultra Max	Herbicide	Griffith Feed and Grain	Y	3 (PG III)	N/A	8/11/2026	1170	N/A	25 L	50 L	Chemical Shed	Control of Weeds
Sanimist	Hand Sanitiser	Rapid Clean	Y	2A	N/A	12/03/2025	1170	N/A	5 ltrs	20 ltrs	Every entrance/Office	Refill chemical for Sanitiser pumps for hand sanitising prior to entry to farm or sheds
Sanitary Grains	Sanitiser for Sanitary Bins		N	N	NA	1/11/2025	N/A	N/A	4kg	10kg	Amenities Block	Sanitiser for Sanitary Bins
Stricker Hericide	Herbicide	Griffith Feed and Grain	Y	9 (PG III)	S5	5/04/2028	3082	59090	5L	10L	Chemical Shed	Control of Weeds
Surefire Difenate All Weater Blocks	Rodenticide Blocks	Griffith Feed and Grain	N	N/A	S6	12/10/2025	N/A	N/A	8kg	40kg	Chemical Shed	Control of rodents
Total Kleen	General Cleaner – Washing Sheds	Meyers	N/A	N/A	S5	1/02/2027	N/A	N/A	25L	N/A	Chemical Shed <i>Temporary storage during cleanout</i>	Detergent for washing sheds between batches
Unleaded Fuel	Unleaded Fuel	ExxonMobil	Y	3 (PG I)	S5	13/10/2025	1203	N/A	S	20L	Workshop	Fuel for farm equipment
Virukill	Sanitiser	Griffith Feed and Grain	Y	NA	NA	11/06/2025	NA	50860	20 L	80ltres	Chemical Shed	Sanitation of equipment and wheels, Cool Cell Sumps

NB. All other Substances may only be kept in minor quantities of less than 5L or 5kg. Any quantity above this will be required to be approved and added to the Chemical Register

Appendix 2 – Maps





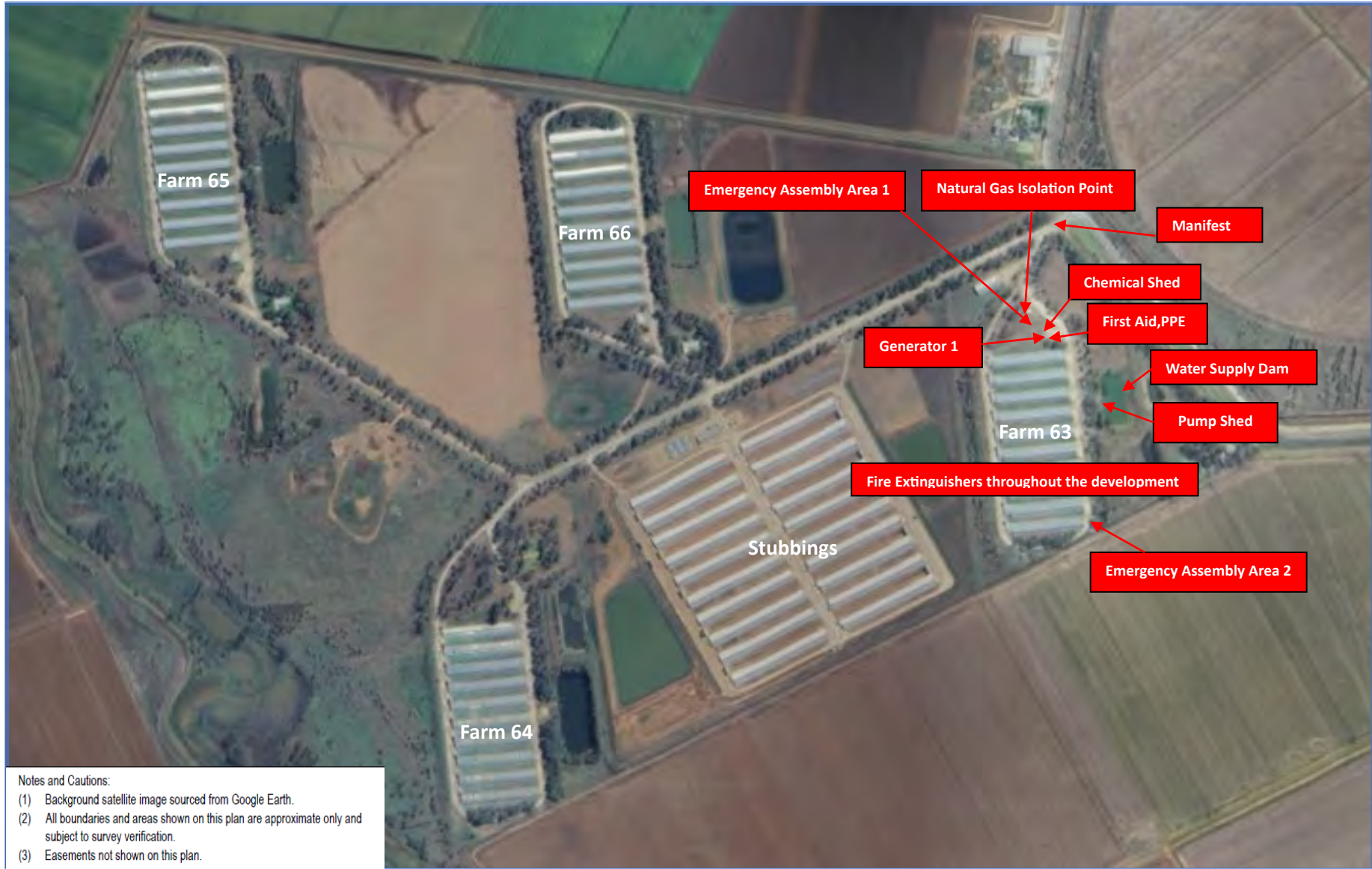


Notes and Cautions:

- (1) Background satellite image sourced from Google Earth.
- (2) All boundaries and areas shown on this plan are approximate only and subject to survey verification.
- (3) Easements not shown on this plan.







Notes and Cautions:
 (1) Background satellite image sourced from Google Earth.
 (2) All boundaries and areas shown on this plan are approximate only and subject to survey verification.
 (3) Easements not shown on this plan.



Notes and Cautions:

- (1) Background satellite image sourced from Google Earth.
- (2) All boundaries and areas shown on this plan are approximate only and subject to survey verification.
- (3) Easements not shown on this plan.







